

TIA Data - Analysis - Service



for an optimized operational management of Wastewater Treatment Plants

To ensure a reliable and stable wastewater treatment process a continuous monitoring and target-oriented operational management is required.

For this purpose a regular evaluation, analysis, skilled interpretation and documentation of the measured values is obligatory. Since in industrial companies the focus is often put on the main production process instead of the operation and optimization of the wastewater treatment, TIA offers the **Data-Analysis-Service (DAS)**. This service not only grants an automation of the process monitoring, also the analysis and interpretation of the measured values is executed by TIA. Thus the operator of the plant is not only relieved, he also obtains support and consultancy by TIA.

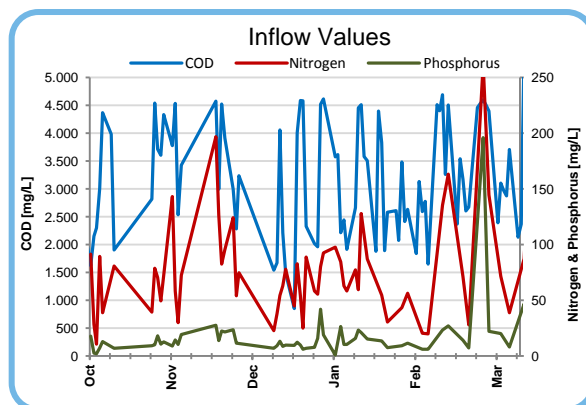
► SERVICE

By means of the **TIA Data-Analysis-Service (DAS)**, TIA implements the regular analysis and evaluation of process data in a wastewater treatment plant. The results and – where applicable – also recommendations and indications for necessary actions in the process management are submitted to the operator. Furthermore in case of malfunction a prompt assessment of the situation and support by TIA is possible thanks to the regular exchange of process data.

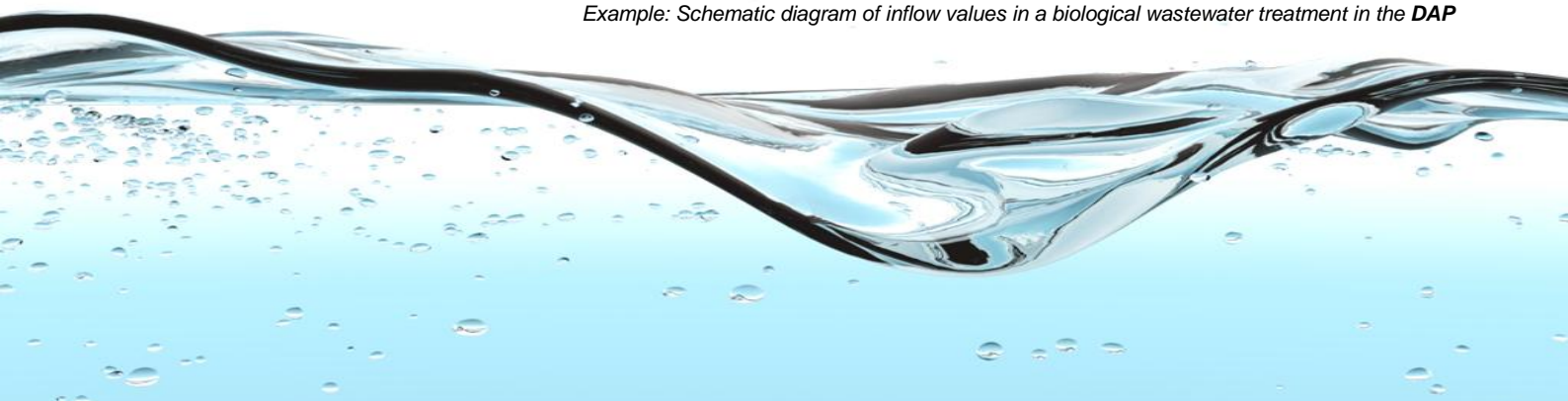
To ensure an easy communication of the process data TIA provides a digital operating log on the basis of Microsoft Excel called **Data-Analysis-Program (DAP)**. It is customized individually to the customer's wastewater treatment plant, to official regulations regarding wastewater discharge and if necessary also the transmission of data to the responsible authority. Besides the automatic archiving of measured values the **DAP** also implements the graphic representation of the data. Thus the plant operator can recognize a required action (i.e. removal of excess sludge) at a glance.

The DAS grants among others:

- Minimization of costs for operating material and energy
- Improvement of process safety
- Early recognition of suspicious process developments
- Repel of exceedance of limit values
- Prevention of extra pay for heavy pollution
- Recognition of effects of different production cycles
- Easy communication of process data

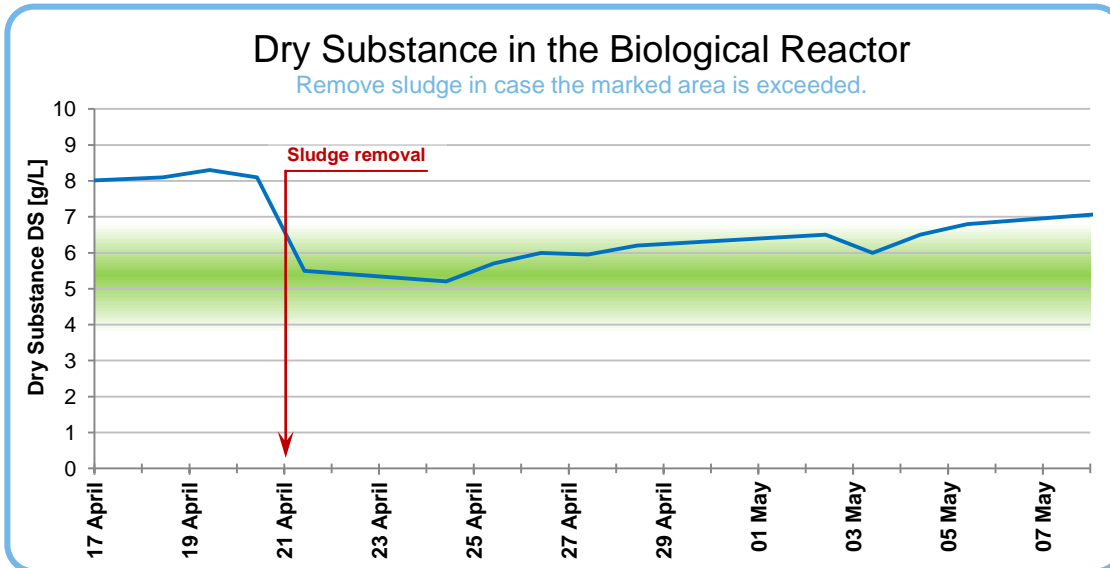


Example: Schematic diagram of inflow values in a biological wastewater treatment in the DAP



Thanks to the **DAS** not only the communication between the plant operator and TIA is simplified, but also the communication and transparency within the customer's factory: By means of the provided **DAP** actual values and graphics can be exchanged easily by e-mail. Furthermore all necessary information for the operation of the plant are bundled in one file.

Thus the wastewater treatment plant can be operated without problems also in case of staff turnover or holiday replacement.



*Example:
Schematic diagram
with instruction in
the DAP for a bio-
logical wastewater
treatment*

Worldwide available for our clients:

*Austria • Egypt • Ethiopia • Belgium • Bulgaria • Germany • Dubai • France • Ghana • Great Britain • Iran
 Jordan • Kazakhstan • Kuwait • Lebanon • Libya • Malaysia • Mali • Mauritius • Macedonia • Montenegro
 Netherlands • Poland • Romania • Russia • Serbia • Seychelles • Syria • Taiwan • Ukraine*



TIA TECHNOLOGIEN ZUR INDUSTRIE-ABWASSER-BEHANDLUNG GMBH

Bergkoppel 3 • 23881 Breitenfelde • Germany

☎ +49 (0) 4542 / 85 81-0 • 📠 +49 (0) 4542 / 85 81-99

www.tia-abwasser.de • info@tia-abwasser.de

